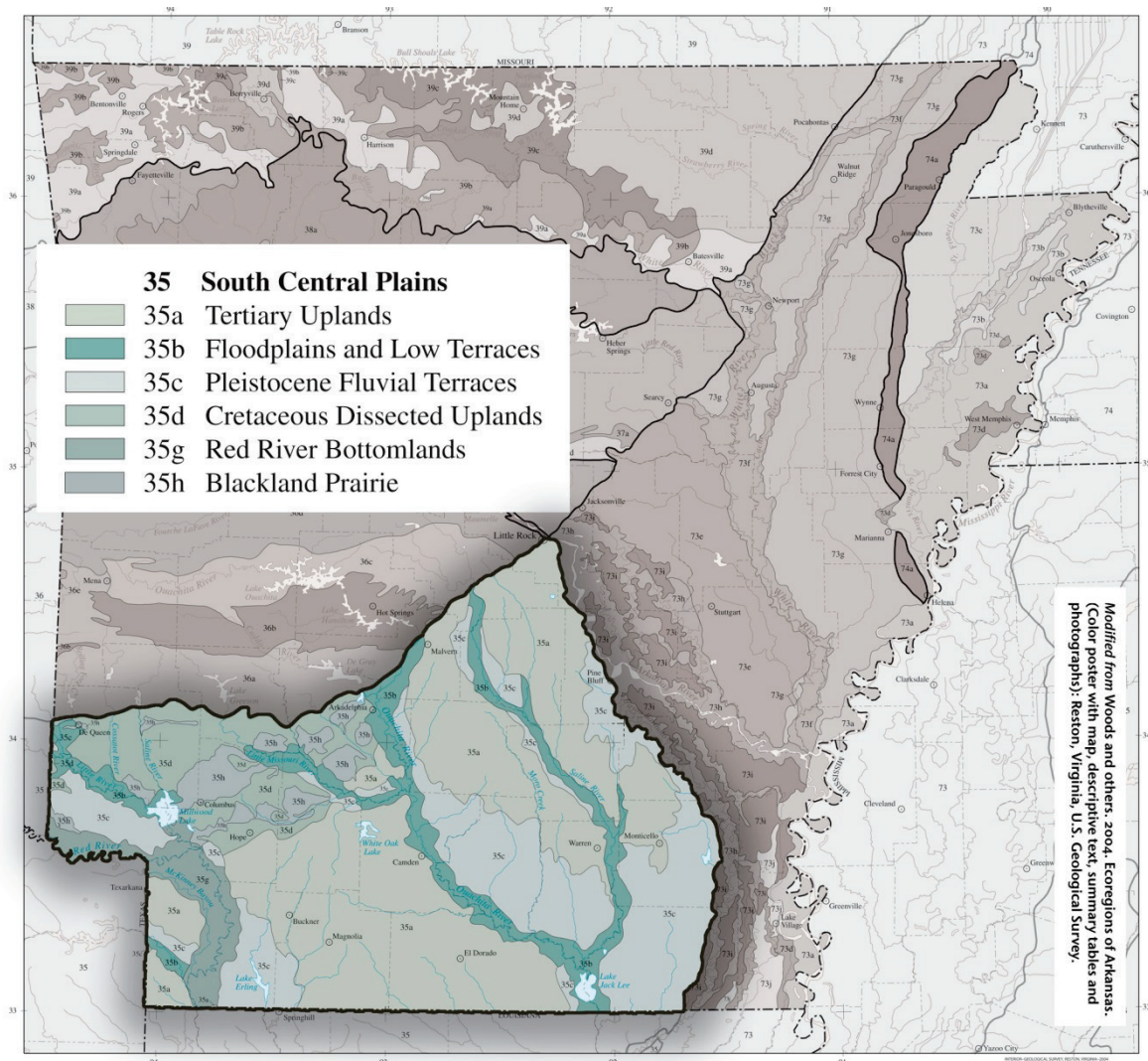


South Central Plains (Ecoregion 35)

Ecoregion 35 is composed of rolling plains that are broken by nearly flat fluvial terraces, bottomlands, sandy low hills and low cuestas; its terrain is unlike the much more rugged Ouachita Mountains (36) or the flatter, less dissected Mississippi Alluvial Plain (73). Uplands are underlain by poorly-consolidated, Tertiary- through Cretaceous-age, coastal plain deposits and marginal marine sediments (laid down as the Gulf of Mexico opened and North America's southern continental margin subsided). Bottomlands and terraces are veneered with Quaternary alluvium or windblown silt deposits (loess). The lithologic mosaic is distinct from the Paleozoic rocks of Ecoregion 36 and the strictly Quaternary deposits of Ecoregion 73.

Potential natural vegetation is oak–hickory–pine forest on uplands and southern floodplain forest on bottomlands. Today, more than 75 percent of Ecoregion 35 remains wooded.

Figure 3.16. South Central Plains Ecoregion





South Central Plains - Blackland Prairie

Extensive commercial loblolly pine–shortleaf pine plantations occur. Lumber and pulpwood production, livestock grazing and crawfish farming are major land uses.

Cropland dominates the drained bottomlands of the Red River. Turbidity and total suspended solid concentrations are usually low except in the Red River. Summer flow in many small streams is limited or nonexistent but enduring pools may occur. Fish communities typically have a limited proportion of sensitive species; sunfishes are dominant and darters and minnows are common.

Tertiary Uplands

35a. The rolling Tertiary Uplands are dominated by commercial pine plantations that have replaced the native oak– hickory–pine forest. Ecoregion 35a is underlain by poorly-consolidated Tertiary sand, silt and gravel; it lacks the Cretaceous, often calcareous rocks of Ecoregion 35d and the extensive Quaternary alluvium of Ecoregions 35b, 35g and 73.

Extensive forests dominated by loblolly and shortleaf pines grow on loamy, well- drained, thermic Ultisols; scattered, stunted, sandhill woodlands also occur.

Waters tend to be stained by organics, thus lowering water clarity and increasing total organic carbon and biochemical oxygen demand levels. Most streams have a sandy substrate and a forest canopy. Many do not flow during the summer or early fall. However, in sandhills, spring-fed, perennial streams occur; here, total dissolved solids, total suspended solids, alkalinity and hardness values are lower than elsewhere in Ecoregion 35. Water quality in forested basins is

better than in pastureland. Oil production has lowered stream quality in the south.

Floodplains and Low Terraces

35b. The Floodplains and Low Terraces ecoregion is nearly level, veneered by Holocene alluvium and contains natural levees, swales, oxbow lakes and meander scars. Longitudinal channel gradients are low and are less than in the Ouachita Mountains (36). Large parts of Ecoregion 35b are frequently flooded.

Forested wetlands are characteristic, but pastureland also occurs. Cropland is far less common than in the Red River Bottomlands (35g). Potential natural vegetation is southern floodplain forest as in the Mississippi Alluvial Plain (73); it is unlike the oak–hickory–pine forest of the higher, better drained and lithologically distinct Tertiary Uplands (35a) and Cretaceous Dissected Uplands (35d).

Pleistocene Fluvial Terraces

35c. The Pleistocene Fluvial Terraces are nearly level, poorly-drained, periodically wet, underlain by Pleistocene unconsolidated terrace deposits and covered by pine flatwoods. Loblolly pine and oaks are common and are adapted to the prevailing hydroxeric regime; pastureland and hayland are less extensive.

A vertical sequence of terraces occurs. The lowest terrace is nearly flat, clayey and has extensive hardwood wetlands. Higher terraces become progressively older and more dissected; they are dominated by pine flatwoods, pine savanna, or prairie; flatwood wetlands are less extensive than on the lowest terrace. The midlevel terrace is veneered with windblown silt deposits (loess). Streams tend to be mildly acidic and stained by organic matter. They have more suspended solids, greater turbidity and higher hardness values than Ecoregion 35a.

Cretaceous Dissected Uplands

35d. The nearly level to hilly Cretaceous Dissected Uplands ecoregion has a greater drainage density than other parts of Ecoregion 35. Ecoregion 35a is underlain by Cretaceous sandy, clayey, or gravelly deposits that are often calcareous; it is lithologically distinct from the Tertiary noncalcareous deposits of Ecoregion 35a, the Quaternary alluvium of Ecoregions 35b, 35g and 73 and the chalks and marls of Ecoregion 35h.

Native vegetation is largely oak–hickory–pine forest. Today, woods and pastureland are common. Water quality in forested watersheds tends to be good and is better than in pastureland. Streams generally have lower total dissolved solids values and much lower total organic carbon values than Ecoregions 35a and 35c, although turbidity, total suspended solids and hardness values are slightly higher. Longitudinal stream gradients and Ouachita Mountain influences are greater than in Ecoregions 35a or 35c.

Red River Bottomlands

35g. The nearly flat Red River Bottomlands ecoregion is veneered with Holocene alluvium and has been widely cleared and drained for agriculture. It contains flood- plains, low terraces, oxbow lakes, meander scars, backswamps, natural levees and the meandering Red River.

Potential natural vegetation is southern floodplain forest; it is unlike the oak–hickory–pine forest of higher, better drained and lithologically distinct Ecoregions 35a and 35d. Western species, such as bur oak and Durand oak, were native to Ecoregion

35g but were typically absent from the Mississippi Alluvial Plain (73). The natural forest of Ecoregion 35g has been largely replaced by agriculture. Today, cropland is more extensive than in other parts of Ecoregion 35 in Arkansas. The Red River is almost continuously turbid; suspended sediment concentrations are usually much higher than in the Saline or Ouachita rivers of Ecoregion 35b due to land cover, land use and upstream lithology differences.

Blackland Prairie

35h. The level to rolling Blackland Prairie characteristically has dark soils derived from underlying Cretaceous marl, chalk and limestone.

Prairie was common or dominant during and shortly after the Hypsithermal Period in the middle of the Holocene Epoch. By the late 18th century, Ecoregion 35h was a mosaic of woodland, savanna and prairies, containing species that were found nowhere else in Arkansas. Today, hayland and, especially, pastureland dominate; pastureland is more common than elsewhere in Arkansas' South Central Plains (35). Only a few prairie remnants still occur and are mostly limited to the thin, droughty soils of cuesta scarps (adapted from Woods and others 2004).

South Central Plains Ecoregion: Species of Greatest Conservation Need (SGCN)

Species of greatest conservation need (SGCN) in the South Central Plains are presented by taxa association (Table 3.22). A higher priority score indicates a greater need for actions to conserve the species. A ranked list of all SGCN associated with the ecoregion is presented in Table 3.23.

Table 3.22. SGCN by taxa association.

Taxa Association	Common Name	Scientific Name	Priority Score
Amphibian	Louisiana Slimy Salamander	<i>Plethodon kisatchie</i>	27
	Spotted Dusky Salamander	<i>Desmognathus conanti</i>	23
	Squirrel Treefrog	<i>Hyla squirella</i>	23
	Crawfish Frog	<i>Lithobates areolatus</i>	23
	Hurter's Spadefoot	<i>Scaphiopus hurterii</i>	19

	Mole Salamander	<i>Ambystoma talpoideum</i>	15
	Dwarf Salamander	<i>Eurycea quadridigitata</i>	15
	Bird-voiced Treefrog	<i>Hyla avivoca</i>	15
Bird	Piping Plover	<i>Charadrius melodus</i>	43
	Red-cockaded Woodpecker	<i>Picoides borealis</i>	43
	Henslow's Sparrow	<i>Ammodramus henslowii</i>	33
	Sprague's Pipit	<i>Anthus spragueii</i>	33
	Bachman's Sparrow	<i>Peucaea aestivalis</i>	33
	King Rail	<i>Rallus elegans</i>	33
	Interior Least Tern	<i>Sterna antillarum athalassos</i>	31
	Buff-breasted Sandpiper	<i>Calidris subruficollis</i>	29
	Swallow-tailed Kite	<i>Elanoides forficatus forficatus</i>	29
	Rusty Blackbird	<i>Euphagus carolinus</i>	29
	Bewick's Wren	<i>Thryomanes bewickii</i>	29
	Ruddy Turnstone	<i>Arenaria interpres</i>	24
	Smith's Longspur	<i>Calcarius pictus</i>	24
	Common Nighthawk	<i>Chordeiles minor</i>	24
	Migrant Loggerhead Shrike	<i>Lanius ludovicianus migrans</i>	24
	Yellow-crowned Night-Heron	<i>Nyctanassa violacea</i>	24
	American Woodcock	<i>Scolopax minor</i>	24
	Cerulean Warbler	<i>Setophaga cerulea</i>	24
	American Bittern	<i>Botaurus lentiginosus</i>	23
	Willow Flycatcher	<i>Empidonax traillii</i>	23
	Purple Gallinule	<i>Porphyrio martinicus</i>	23
	Le Conte's Sparrow	<i>Ammodramus leconteii</i>	21
	Sedge Wren	<i>Cistothorus platensis</i>	21
	Sharp-shinned Hawk	<i>Accipiter striatus</i>	19
	Grasshopper Sparrow	<i>Ammodramus savannarum</i>	19
	American Black Duck	<i>Anas rubripes</i>	19
	Anhinga	<i>Anhinga anhinga</i>	19
	Eastern Whip-poor-will	<i>Antrastomus vociferus</i>	19
	Sanderling	<i>Calidris alba</i>	19
	Dunlin	<i>Calidris alpina</i>	19
	Stilt Sandpiper	<i>Calidris himantopus</i>	19
	Chimney Swift	<i>Chaetura pelagica</i>	19
	Yellow-billed Cuckoo	<i>Coccyzus americanus</i>	19
	Northern Bobwhite	<i>Colinus virginianus</i>	19
	Tricolored Heron	<i>Egretta tricolor</i>	19
	Common Gallinule	<i>Gallinula chloropus</i>	19
	Purple Finch	<i>Haemorhous purpureus</i>	19
	Wood Thrush	<i>Hylocichla mustelina</i>	19
	Least Bittern	<i>Ixobrychus exilis</i>	19
	Short-billed Dowitcher	<i>Limnodromus griseus</i>	19
	Swainson's Warbler	<i>Limnothlypis swainsonii</i>	19
	Black-crowned Night-Heron	<i>Nycticorax nycticorax</i>	19
	Black-bellied Plover	<i>Pluvialis squatarola</i>	19

	Bell's Vireo	<i>Vireo bellii</i>	19
	Trumpeter Swan	<i>Cygnus buccinator</i>	17
	American Kestrel	<i>Falco sparverius</i>	15
	American Golden-Plover	<i>Pluvialis dominica</i>	15
Crayfish	Slenderwrist Burrowing Crayfish	<i>Fallicambarus petilicarpus</i>	80
	Saline Burrowing Crayfish	<i>Fallicambarus strawni</i>	65
	Bayou Bodcau Crayfish	<i>Bouchardina robisoni</i>	50
	Jefferson County Crayfish	<i>Fallicambarus gilpini</i>	50
	Blair's Fencing Crayfish	<i>Faxonella blairi</i>	46
	Regal Burrowing Crayfish	<i>Procambarus regalis</i>	36
	Pine Hills Digger	<i>Fallicambarus dissitus</i>	32
	Bismark Burrowing Crayfish	<i>Procambarus parasimulans</i>	19
Fish	Alabama Shad	<i>Alosa alabamae</i>	52
	Ouachita Darter	<i>Percina brucehompsoni</i>	46
	Crystal Darter	<i>Crystallaria asprella</i>	38
	Stargazing Darter	<i>Percina uranidea</i>	38
	Western Sand Darter	<i>Ammocrypta clara</i>	33
	Peppered Shiner	<i>Notropis perpallidus</i>	33
	Bluehead Shiner	<i>Pteronotropis hubbsi</i>	33
	Alligator Gar	<i>Atractosteus spatula</i>	27
	Plains Minnow	<i>Hybognathus placitus</i>	27
	Ouachita Mountain Shiner	<i>Lythrurus snelsoni</i>	27
	Red River Shiner	<i>Notropis bairdi</i>	27
	Brown Madtom	<i>Noturus phaeus</i>	27
	American Eel	<i>Anguilla rostrata</i>	24
	Paddlefish	<i>Polyodon spathula</i>	24
	Blue Sucker	<i>Cycleptus elongatus</i>	23
	Lowland Topminnow	<i>Fundulus blirae</i>	23
	Chub Shiner	<i>Notropis potteri</i>	23
	Brown Bullhead	<i>Ameiurus nebulosus</i>	19
	Goldeye	<i>Hiodon alosoides</i>	19
	Mooneye	<i>Hiodon tergisus</i>	19
	American Brook Lamprey	<i>Lethenteron appendix</i>	19
	Striped Mullet	<i>Mugil cephalus</i>	19
	Blackspot Shiner	<i>Notropis atrocaudalis</i>	19
	Slenderhead Darter	<i>Percina phoxocephala</i>	19
	Highfin carpsucker	<i>Carpionodes velifer</i>	17
	Goldstripe Darter	<i>Etheostoma parvipinne</i>	17
	Lake Chubsucker	<i>Erimyzon sucetta</i>	15
	Swamp Darter	<i>Etheostoma fusiforme</i>	15
	Shoal Chub	<i>Macrhybopsis hyostoma</i>	15
	Saddleback Darter	<i>Percina vigil</i>	15
Insect	Rattlesnake-Master Borer Moth	<i>Papaipema eryngii</i>	65
	stonefly	<i>Leuctra paleo</i>	50
	Texas Frosted Elfin	<i>Callophrys irus hadros</i>	42
	American Burying Beetle	<i>Nicrophorus americanus</i>	42

	Dukes' Skipper	<i>Euphyes dukesi</i>	32
	Mottled Duskywing	<i>Erynnis martialis</i>	29
	Meske's Skipper	<i>Hesperia meskei</i>	29
	Lace-winged Roadside-Skipper	<i>Amblyscirtes aesculapius</i>	27
	Appalachian Azure	<i>Celastrina neglectamajor</i>	27
	Ozark Clubtail Dragonfly	<i>Gomphus ozarkensis</i>	27
	Georgia Satyr	<i>Neonympha areolata areolata</i>	27
	Giant Stag Beetle	<i>Lucanus elephus</i>	25
	Diana	<i>Speyeria diana</i>	25
	Northern Metalmark	<i>Calephelis borealis</i>	23
	Outis Skipper	<i>Cogia outis</i>	23
	Yehl Skipper	<i>Poanes yehl</i>	23
	Byssus Skipper	<i>Problema byssus</i>	23
	King's Hairstreak	<i>Satyrium kingi</i>	23
	anthophorid bee	<i>Tetraloniella albata</i>	23
	Bell's Roadside-Skipper	<i>Amblyscirtes belli</i>	21
	tiger beetle	<i>Cicindela lepida</i>	21
	Texas milkweed beetle	<i>Tetraopes texanus</i>	21
	Dion Skipper	<i>Euphyes dion</i>	19
	Leonard's Skipper	<i>Hesperia leonardus</i>	19
	Cobweb Skipper	<i>Hesperia metea</i>	19
	Oak Hairstreak	<i>Satyrium favonius ontario</i>	19
	Beach-dune Tiger Beetle	<i>Cicindela hirticollis</i>	17
	Dusky Azure	<i>Celastrina nigra</i>	15
	Gorgone Checkerspot	<i>Chlosyne gorgone</i>	15
	Monarch	<i>Danaus plexippus</i>	15
	robberfly	<i>Microstylum morosum</i>	15
	Broad-winged Skipper	<i>Poanes viator</i>	15
	winter stonefly	<i>Allocapnia malverna</i>	11
Invertebrate - other	Channelled Pebblesnail	<i>Somatogyryus wheeleri</i>	80
Mammal	Northern Long-eared Bat	<i>Myotis septentrionalis</i>	63
	Little Brown Bat	<i>Myotis lucifugus</i>	33
	Rafinesque's Big-Eared Bat	<i>Corynorhinus rafinesquii</i>	29
	Southeastern Bat	<i>Myotis austroriparius</i>	24
	Eastern Spotted Skunk	<i>Spilogale putorius</i>	21
	Crawford's Gray Shrew	<i>Notiosorex crawfordi</i>	19
	Eastern Harvest Mouse	<i>Reithrodontomys humulis</i>	19
	Long-tailed Weasel	<i>Mustela frenata</i>	15
Mussel	Scaleshell	<i>Leptodea leptodon</i>	95
	Ouachita Rock Pocketbook	<i>Arcidens wheeleri</i>	80
	Arkansas Fatmucket	<i>Lampsilis powellii</i>	76
	Winged Mapleleaf	<i>Quadrula fragosa</i>	76
	Louisiana Pearlshell	<i>Margaritifera hembeli</i>	65
	Texas Pigtoe	<i>Pleurobema riddellii</i>	57
	"Ouachita" Fanshell	<i>Cyprogenia sp. Cf aberti</i>	52
	Purple Lilliput	<i>Toxolasma lividum</i>	52

	Spectaclecase	<i>Cumberlandia monodonta</i>	48
	Pink Mucket	<i>Lampsilis abrupta</i>	46
	Rabbitsfoot	<i>Quadrula cylindrica</i>	33
	Purple Pimpleback	<i>Quadrula refulgens</i>	30
	Ohio Pigtoe	<i>Pleurobema cordatum</i>	27
	Ouachita Kidneyshell	<i>Ptychobranhus occidentalis</i>	23
	Pondhorn	<i>Unio merus tetralasmus</i>	23
	Elktoe	<i>Alasmidonta marginata</i>	19
	Southern Pocketbook	<i>Lampsilis ornata</i>	19
	"Red River" Mucket	<i>Lampsilis sp. B</i>	19
	Hickorynut	<i>Obovaria olivaria</i>	19
	Gulf mapleleaf	<i>Quadrula nobilis</i>	19
	Lilliput	<i>Toxolasma parvum</i>	19
	Texas Lilliput	<i>Toxolasma texasiense</i>	19
	Tapered Pondhorn	<i>Unio merus declivis</i>	19
	Round Pigtoe	<i>Pleurobema sintoxia</i>	17
	Little Spectaclecase group	<i>Villosa sp. Cf lienosa</i>	17
	Fatmucket	<i>Lampsilis siliquoidea</i>	15
	Southern Mapleleaf	<i>Quadrula apiculata</i>	15
	Fawnsfoot	<i>Truncilla donaciformis</i>	15
Reptile	Western Chicken Turtle	<i>Deirochelys reticularia miaria</i>	19
	Texas Coral Snake	<i>Micrurus tener</i>	19
	Southern Prairie Skink	<i>Plestiodon obtusirostris</i>	19
	Graham's Crayfish Snake	<i>Regina grahamii</i>	19
	Gulf Swampsnake	<i>Liodytes rigida</i>	15
	Slender Glass Lizard	<i>Ophisaurus attenuatus</i>	15

Table 3.23. Species of greatest conservation need (SGCN) in the South Central Plains ranked by priority score. A higher priority score indicates a greater need for actions to conserve the species. Of the 377 SGCN, 169 occur in this ecoregion.

Priority Score	Common Name	Scientific Name	Taxa Association
95	Scaleshell	<i>Leptodea leptodon</i>	Mussel
80	Ouachita Rock Pocketbook	<i>Arcidens wheeleri</i>	Mussel
80	Slenderwrist Burrowing Crayfish	<i>Fallicambarus petilicarpus</i>	Crayfish
80	Channelled Pebblesnail	<i>Somatoa vrus wheeleri</i>	Invertebrate - other
76	Arkansas Fatmucket	<i>Lampsilis powellii</i>	Mussel
76	Winged Mapleleaf	<i>Quadrula fraaosa</i>	Mussel
65	Saline Burrowing Crayfish	<i>Fallicambarus strawni</i>	Crayfish
65	Louisiana Pearlshell	<i>Margaritifera hembeli</i>	Mussel
65	Rattlesnake-Master Borer Moth	<i>Papaipema ervnii</i>	Insect
63	Northern Long-eared Bat	<i>Myotis septentrionalis</i>	Mammal
57	Texas Pigtoe	<i>Pleurobema riddellii</i>	Mussel
52	Alabama Shad	<i>Alosa alabamae</i>	Fish
52	"Ouachita" Fanshell	<i>Cyproaenia sp. Cf aberti</i>	Mussel
52	Purple Lilliput	<i>Toxolasma lividum</i>	Mussel

50	Bayou Bodcau Crayfish	<i>Bouchardina robisoni</i>	Crayfish
50	Jefferson County Crayfish	<i>Fallicambarus gilpini</i>	Crayfish
50	stonefly	<i>Leuctra paleo</i>	Insect
48	Spectaclecase	<i>Cumberlandia monodonta</i>	Mussel
46	Blair's Fencing Crayfish	<i>Faxonella blairi</i>	Crayfish
46	Pink Mucket	<i>Lampsilis abrupta</i>	Mussel
46	Ouachita Darter	<i>Percina brucethompsoni</i>	Fish
43	Piping Plover	<i>Charadrius melodus</i>	Bird
43	Red-cockaded Woodpecker	<i>Picoides borealis</i>	Bird
42	Texas Frosted Elfin	<i>Callophrys irus hadros</i>	Insect
42	American Burving Beetle	<i>Nicrophorus americanus</i>	Insect
38	Crystal Darter	<i>Crystallaria asprella</i>	Fish
38	Stargazing Darter	<i>Percina uranidea</i>	Fish
36	Regal Burrowing Crayfish	<i>Procambarus requalis</i>	Crayfish
33	Western Sand Darter	<i>Ammocrypta clara</i>	Fish
33	Henslow's Sparrow	<i>Ammodramus henslowii</i>	Bird
33	Sprague's Pipit	<i>Anthus spragueii</i>	Bird
33	Little Brown Bat	<i>Myotis lucifugus</i>	Mammal
33	Peppered Shiner	<i>Notropis perpallidus</i>	Fish
33	Bachman's Sparrow	<i>Peucaea aestivalis</i>	Bird
33	Bluehead Shiner	<i>Pteronotropis hubbsi</i>	Fish
33	Rabbitsfoot	<i>Quadrula cylindrica</i>	Mussel
33	King Rail	<i>Rallus elegans</i>	Bird
32	Dukes' Skipper	<i>Euphyes dukesi</i>	Insect
32	Pine Hills Digger	<i>Fallicambarus dissitus</i>	Crayfish
31	Interior Least Tern	<i>Sterna antillarum athalassos</i>	Bird
30	Purple Pimpleback	<i>Quadrula refulaens</i>	Mussel
29	Buff-breasted Sandpiper	<i>Calidris subruficollis</i>	Bird
29	Rafinesque's Big-Eared Bat	<i>Corvynorhinus rafinesquii</i>	Mammal
29	Swallow-tailed Kite	<i>Elanoides forficatus forficatus</i>	Bird
29	Mottled Duskwing	<i>Erynnis martialis</i>	Insect
29	Rusty Blackbird	<i>Euphagus carolinus</i>	Bird
29	Meske's Skipper	<i>Hesperia meskei</i>	Insect
29	Bewick's Wren	<i>Thryomanes bewickii</i>	Bird
27	Lace-winged Roadside-Skipper	<i>Amblyscirtes aesculapius</i>	Insect
27	Alligator Gar	<i>Atractosteus spatula</i>	Fish
27	Appalachian Azure	<i>Celastrina neglectamajor</i>	Insect
27	Ozark Clubtail Dragonfly	<i>Gomphus ozarkensis</i>	Insect
27	Plains Minnow	<i>Hybognathus placitus</i>	Fish
27	Ouachita Mountain Shiner	<i>Lythrurus snelsoni</i>	Fish
27	Georgia Satyr	<i>Neonympha areolata areolata</i>	Insect
27	Red River Shiner	<i>Notropis bairdi</i>	Fish
27	Brown Madtom	<i>Noturus phaeus</i>	Fish
27	Louisiana Slimy Salamander	<i>Plethodon kisatchie</i>	Amphibian
27	Ohio Pigtoe	<i>Pleurobema cordatum</i>	Mussel
25	Giant Stag Beetle	<i>Lucanus elephus</i>	Insect
25	Diana	<i>Speyeria diana</i>	Insect
24	American Eel	<i>Anguilla rostrata</i>	Fish
24	Ruddy Turnstone	<i>Arenaria interpres</i>	Bird
24	Smith's Longspur	<i>Calcarius pictus</i>	Bird

24	Common Nighthawk	<i>Chordeiles minor</i>	Bird
24	Migrant Loggerhead Shrike	<i>Lanius ludovicianus migrans</i>	Bird
24	Southeastern Bat	<i>Myotis austroriparius</i>	Mammal
24	Yellow-crowned Night-Heron	<i>Nyctanassa violacea</i>	Bird
24	Paddlefish	<i>Polyodon spathula</i>	Fish
24	American Woodcock	<i>Scolopax minor</i>	Bird
24	Cerulean Warbler	<i>Setophaga cerulea</i>	Bird
23	American Bittern	<i>Botaurus lentiginosus</i>	Bird
23	Northern Metalmark	<i>Calephelis borealis</i>	Insect
23	Outis Skipper	<i>Cogia outis</i>	Insect
23	Blue Sucker	<i>Cycleptus elongatus</i>	Fish
23	Spotted Dusky Salamander	<i>Desmognathus conanti</i>	Amphibian
23	Willow Flycatcher	<i>Empidonax traillii</i>	Bird
23	Lowland Topminnow	<i>Fundulus blairae</i>	Fish
23	Squirrel Treefrog	<i>Hyla squirella</i>	Amphibian
23	Crawfish Frog	<i>Lithobates areolatus</i>	Amphibian
23	Chub Shiner	<i>Notropis potteri</i>	Fish
23	Yehl Skipper	<i>Poanes yehl</i>	Insect
23	Purple Gallinule	<i>Porphyrio martinicus</i>	Bird
23	Byssus Skipper	<i>Problema byssus</i>	Insect
23	Ouachita Kidneyshell	<i>Ptychobranthus occidentalis</i>	Mussel
23	King's Hairstreak	<i>Satyrium kingi</i>	Insect
23	anthophorid bee	<i>Tetraloniella albata</i>	Insect
23	Pondhorn	<i>Uniomerus tetralasmus</i>	Mussel
21	Le Conte's Sparrow	<i>Ammodramus leconteii</i>	Bird
21	Bell's Roadside-Skipper	<i>Amblyscirtes belli</i>	Insect
21	tiger beetle	<i>Cicindela lepida</i>	Insect
21	Sedge Wren	<i>Cistothorus platensis</i>	Bird
21	Eastern Spotted Skunk	<i>Spilogale putorius</i>	Mammal
21	Texas milkweed beetle	<i>Tetraopes texanus</i>	Insect
19	Sharp-shinned Hawk	<i>Accipiter striatus</i>	Bird
19	Elktoe	<i>Alasmidonta marginata</i>	Mussel
19	Brown Bullhead	<i>Ameiurus nebulosus</i>	Fish
19	Grasshopper Sparrow	<i>Ammodramus savannarum</i>	Bird
19	American Black Duck	<i>Anas rubripes</i>	Bird
19	Anhinga	<i>Anhinga anhinga</i>	Bird
19	Eastern Whip-poor-will	<i>Antrostomus vociferus</i>	Bird
19	Sanderling	<i>Calidris alba</i>	Bird
19	Dunlin	<i>Calidris alpina</i>	Bird
19	Stilt Sandpiper	<i>Calidris himantopus</i>	Bird
19	Chimney Swift	<i>Chaetura pelagica</i>	Bird
19	Yellow-billed Cuckoo	<i>Coccyzus americanus</i>	Bird
19	Northern Bobwhite	<i>Colinus virginianus</i>	Bird
19	Western Chicken Turtle	<i>Deirochelys reticularia miaria</i>	Reptile
19	Tricolored Heron	<i>Egretta tricolor</i>	Bird
19	Dion Skipper	<i>Euphyes dion</i>	Insect

19	Common Gallinule	<i>Gallinula chloropus</i>	Bird
19	Purple Finch	<i>Haemorhous purpureus</i>	Bird
19	Leonard's Skipper	<i>Hesperia leonardus</i>	Insect
19	Cobweb Skipper	<i>Hesperia metea</i>	Insect
19	Goldeye	<i>Hiodon alosoides</i>	Fish
19	Mooneye	<i>Hiodon tergisus</i>	Fish
19	Wood Thrush	<i>Hylocichla mustelina</i>	Bird
19	Least Bittern	<i>Ixobrychus exilis</i>	Bird
19	Southern Pocketbook	<i>Lampsilis ornata</i>	Mussel
19	"Red River" Mucket	<i>Lampsilis sp. B</i>	Mussel
19	American Brook Lamprey	<i>Lethenteron appendix</i>	Fish
19	Short-billed Dowitcher	<i>Limnodromus griseus</i>	Bird
19	Swainson's Warbler	<i>Limnothlypis swainsonii</i>	Bird
19	Texas Coral Snake	<i>Micrurus tener</i>	Reptile
19	Striped Mullet	<i>Mugil cephalus</i>	Fish
19	Crawford's Gray Shrew	<i>Notiosorex crawfordi</i>	Mammal
19	Blackspot Shiner	<i>Notropis atrocaudalis</i>	Fish
19	Black-crowned Night-Heron	<i>Nycticorax nycticorax</i>	Bird
19	Hickorynut	<i>Obovaria olivaria</i>	Mussel
19	Slenderhead Darter	<i>Percina phoxocephala</i>	Fish
19	Southern Prairie Skink	<i>Plestiodon obtusirostris</i>	Reptile
19	Black-bellied Plover	<i>Pluvialis squatarola</i>	Bird
19	Bismark Burrowing Crayfish	<i>Procambarus parasimulans</i>	Crayfish
19	Gulf mapleleaf	<i>Quadrula nobilis</i>	Mussel
19	Graham's Crayfish Snake	<i>Regina grahamii</i>	Reptile
19	Eastern Harvest Mouse	<i>Reithrodontomys humulis</i>	Mammal
19	Oak Hairstreak	<i>Satyrium favonius ontario</i>	Insect
19	Hurter's Spadefoot	<i>Scaphiopus hurterii</i>	Amphibian
19	Lilliput	<i>Toxolasma parvum</i>	Mussel
19	Texas Lilliput	<i>Toxolasma texasiense</i>	Mussel
19	Tapered Pondhorn	<i>Uniomerus declivis</i>	Mussel
19	Bell's Vireo	<i>Vireo bellii</i>	Bird
17	Highfin carpsucker	<i>Carpionodes velifer</i>	Fish
17	Beach-dune Tiger Beetle	<i>Cicindela hirticollis</i>	Insect
17	Trumpeter Swan	<i>Cygnus buccinator</i>	Bird
17	Goldstripe Darter	<i>Etheostoma parvipinne</i>	Fish
17	Round Pigtoe	<i>Pleurobema sintoxia</i>	Mussel
17	Little Spectaclecase group	<i>Villosa sp. Cf lienosa</i>	Mussel
15	Mole Salamander	<i>Ambystoma talpoideum</i>	Amphibian
15	Dusky Azure	<i>Celastrina nigra</i>	Insect
15	Gorgone Checkerspot	<i>Chlosyne gorgone</i>	Insect
15	Monarch	<i>Danaus plexippus</i>	Insect
15	Lake Chubsucker	<i>Erimyzon sucetta</i>	Fish
15	Swamp Darter	<i>Etheostoma fusiforme</i>	Fish
15	Dwarf Salamander	<i>Eurycea quadridigitata</i>	Amphibian
15	American Kestrel	<i>Falco sparverius</i>	Bird

15	Bird-voiced Treefrog	<i>Hyla avivoca</i>	Amphibian
15	Fatmucket	<i>Lampsilis siliquoidea</i>	Mussel
15	Gulf Swampsnake	<i>Liodytes rigida</i>	Reptile
15	Shoal Chub	<i>Macrhybopsis hyostoma</i>	Fish
15	robberfly	<i>Microstylum morosum</i>	Insect
15	Long-tailed Weasel	<i>Mustela frenata</i>	Mammal
15	Slender Glass Lizard	<i>Ophisaurus attenuatus</i>	Reptile
15	Saddleback Darter	<i>Percina vigil</i>	Fish
15	American Golden-Plover	<i>Pluvialis dominica</i>	Bird
15	Broad-winged Skipper	<i>Poanes viator</i>	Insect
15	Southern Mapleleaf	<i>Quadrula apiculata</i>	Mussel
15	Fawnsfoot	<i>Truncilla donaciformis</i>	Mussel
11	winter stonefly	<i>Allocaenia malverna</i>	Insect

Habitats that occur in the South Central Plains

Of the 37 terrestrial habitats in Arkansas, 17 occur in the South Central Plains ecoregion (Table 3.24). Of 18 ecobasins in Arkansas, two occur in the South Central Plains ecoregion (Figure 3.17). These associations are described in the Section 4. Terrestrial Habitats and Section 5. Aquatic Habitats.

Table 3.24. Terrestrial Habitats in the South Central Plains.

Habitat Name

Crop Land

Cultivated Forest

Herbaceous Wetland

Lower Mississippi Alluvial Plain Grand Prairie

Mud Flats

Pasture Land

Ponds, Lakes, and Water Holes

Urban/Suburban

West Gulf Coastal Plain Calcareous Prairie and Woodland

West Gulf Coastal Plain Pine-Hardwood Flatwoods

West Gulf Coastal Plain Large River Floodplain Forest

West Gulf Coastal Plain Pine-Hardwood Forest/Woodland

West Gulf Coastal Plain Red River Floodplain Forest

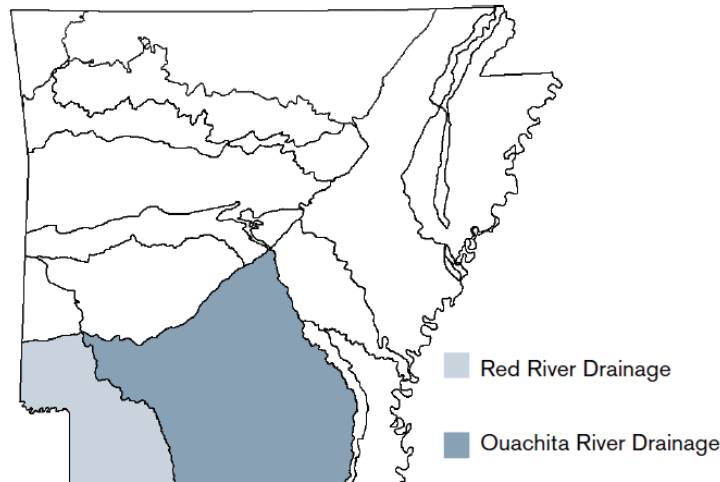
West Gulf Coastal Plain Sandhill Oak and Shortleaf Pine Forest/Woodland

West Gulf Coastal Plain Seepage Swamp and Baygall

West Gulf Coastal Plain Small Stream/River Forest

West Gulf Coastal Plain Wet Hardwood Flatwoods

Figure 3.17. Ecobasin Distribution in the South Central Plains.



Problems faced by Species of Greatest Conservation Need (SGCN)

Taxa association teams listed problems faced by SGCN individually in the Species Reports, pages 44-1113. A summary of the problems faced by SGCN in the South Central Plains is presented below. Each problem has a score which is a sum of all Species Priority Scores associated with species for which this problem was assigned. A higher score implies a higher quantity of SGCN and/or more greatly imperiled species associated with problems listed here.

Table 3.25. Problems faced by SGCN.

Problem faced	Score
Agricultural practices	1958
Road construction	1497
Grazing/Browsing	1439
Urban development	1017
Channel alteration	966
Resource extraction	948
Channel maintenance	856
Fire suppression	708
Water diversion	690
Confined animal operations	596
Conversion of riparian forest	484
Exotic species	284
Recreation	268
Predation	261
Commercial/industrial development	230
Parasites/pathogens	224
Municipal/Industrial point source	192
Management of/for certain species	168
Non-point source pollution	128
Commercial harvest	89
unknown	86
Interspecific competition	48
Excessive groundwater withdrawal	40
Excessive non-commercial harvest or collection	27

Conservation actions needed in the South Central Plains

Descriptions of conservation actions linked to individual species on the list of SGCN are presented in the Species Reports, pages 44-1113. Below are categories of conservation actions recommended by the taxa association teams (Figure 3.18). An explanation of the categories follows in Table 3.26.

The score associated with the conservation action category is the sum of all priority scores associated with species for which a conservation action has been assigned, weighted by the importance of the conservation action category to the species. A higher score implies a higher quantity of SGCN and/or more greatly imperiled species would be affected by actions within this conservation action category.

These scores may be used as guides to directing the apportionment of funding toward conservation actions benefiting habitats and species of greatest conservation need.

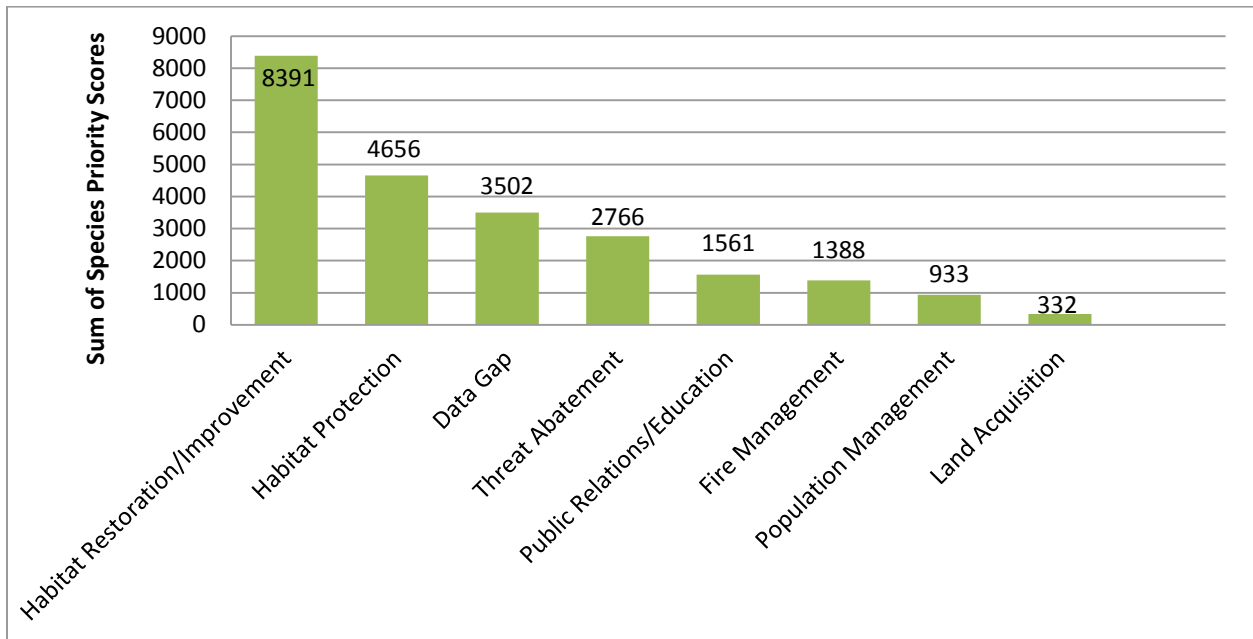


Figure 3.18. Conservation action categories recommended for the South Central Plains.